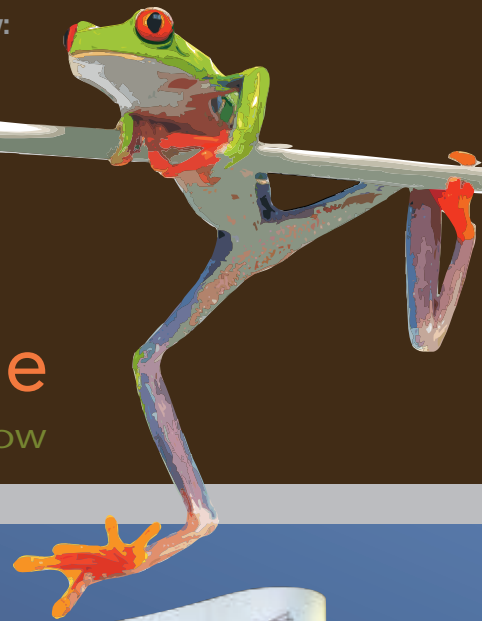


**DRYTAC** display products brought to you by:

**dwa**

# EarthSafeEventSignage

A DIVISION OF DWA TRADE SHOW



**banner stands, portable displays and more**



## GrandStand

**a superior banner stand at a reasonable price, the GrandStand™ is a grand slam**

This mid-range system will withstand the rigors of exhibitions without folding under the pressure. Graphics easily wind into the banner base for quick set-up and break down. With a stylish black finish, both GrandStand™ models project a sleek appearance that doesn't distract from the message. The display includes:

- Gray nylon bag with black trim
- Optional 50 watt light also available
- Available in 33-1/2" (85 cm) and 39-3/8" (100cm) widths by 86-1/4" (220cm) tall



## DRYTAC®

### The Boost™

**An economical, stable roll-up for volume POP applications.**

The Boost™ is a stable banner stand for in-store promotions and advertising campaigns. Unlike most display stands at the same price point, a sturdy steel foot at the base that locks the pole into place helps the banner stay straight. The body of the base is silver and it comes packed in a sturdy cardboard carrying tube. Snap profile top rail. Compatible with optional Drytac Universal Light and LED Light.



**a line of retractables that offers plenty of options**

Available as a single- or double-sided display, Banner Bug™ comes in a range of sizes, from the pint-sized Desk Bug to the 10-foot-high Giant Bug. Banner Bug™ displays are sleek and modern. They roll up in seconds. And when the time comes for new graphics, they're quick and easy to change. Line ranges in width from 8-1/2 " ( 29 cm) to 72" (183cm).





**dwa** Trade Show & Exposition Services 503-228-6800



**eco-friendly display products**

The retractable **PANDA STAND™**, the L-Framed **PANDA L STAND™** and the accompanying literature stands are all constructed of up to 95% bamboo, a fast-growing, renewable resource. An elegant look and environmentally friendly choice. Displays measure 31-1/2" (80cm) by 78-3/4" (200 cm) tall.



**pop ups**



**powerful magnets make hanging graphics a breeze**

From the manufacturer of the BannerBug™ comes the BoothBug™, an innovative portable pop-up display system featuring the exclusive Magna-Strip hanging system. Powerful magnets locate and lock the panel onto the frame almost automatically. Available in 3 x 3 and 3 x 4 models.



**snap-in Graphics suspension bars make hanging banners a snap.**

Snap-In Graphics Bar converts basic prints into elegant suspended graphics in a snap. Suspended from a ceiling or in a window, the stylish brushed aluminum finish provides upper and lower borders for the image while keeping the media straight and taut.



**EconomyPopUP™**

**an economical display package**

The all aluminum self-locking frame pops up easily to form a stable and sturdy backwall for trade shows and exhibits. Available in 2x2 and 3x3 models. Comes with its own hard case and two halogen lights.

# Bargainbanner

## Lightweight, adjustable height signage for your next event

A simple entry-level banner stand with a four-pronged foot and an aluminum pole. The system uses 2 graphic rails (23-5/8" / 60cm) that simply attach to the pole via clear plastic strips. The height of the graphic can be adjusted up to 77-1/2" (197cm). Simply slide the clips up and down the pole. Carrying bag is included.

cases & li Ghtin G



## universal display light system

Our lightweight and elegant lighting system attaches quickly and securely to most Drytac® banner stands and display systems, as well as most other brands.

## replacement bulb carrying case

Helps prevent breakage when packing extra light bulbs. Comes with two replacement bulbs already inside.



## custom banner stand hardcase

Extra protection and easy transport for most 33-7/16" (85cm) wide or smaller banner stands.

## contact :



**TJ MORIN**  
 graphic sales and services  
 3721 Front Portland OR 97210  
 503.228.6800 cell 503.830.8743

**EarthSafeEventSignage**  
 a division of DWA Trade Show & Exposition Services



## Zip up™ literature stand

### Folds easily with your literature inside

With a small 9-1/2" x 11" footprint, it's also convenient for travel because it folds down to only 19 inches. Silver base finish, includes nylon carrying bag. A lightweight, extra sturdy hard case is optional.



## Fold 'n Go™ literature stand

### Lightweight and attractive

Great value in a lightweight, easy-to-set up literature display. Padded nylon carrying case standard. Optional hard case shown above.